

# Director's Closing Remarks

Steven K. Libutti, MD, FACS

April 26, 2023



**RUTGERS**  
Cancer Institute  
of New Jersey  
**RUTGERS HEALTH**

**NCI** Comprehensive  
Cancer Center  
A Cancer Center Designated by the  
National Cancer Institute



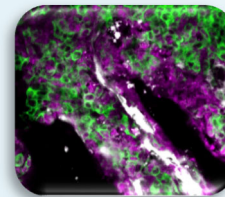
**RWJ Barnabas**  
**HEALTH**

# Progress and Impact



## Increased Impactful Research

- Basic, Clinical and Population
- Focus on Transdisciplinary Research
- Integration of Cancer Training and Education in Research Programs



## Defined a High Impact Scientific Initiative

- Cancer Immunology and Metabolism Center of Excellence
- Ludwig Institute for Cancer Research – Princeton Branch



## Effectively Served Catchment Area

- Focus on all CA priority cancers
- Cover all 21 New Jersey counties
- Over 57,000 people navigated to preventive services



## Expanded Clinical Research Activities

- Across CINJ-managed RWJBH Oncology Service Line
- Dramatically increased therapeutic clinical trial accrual



## Increased NCI and Overall PR Funding

- Two-fold increase in multi-PI grants
- Two new multi-project program grants
- Four new (T32 and other) NCI-funded training projects



## Developed a Plan to Enhance Diversity

- Recruited AD and created DEI Office
- Implementing initiatives to foster a diverse and inclusive environment

# Progress and Impact



## Significantly Increased State and Institutional Support

- New programs
- Program development and expansion
- Tenure track investigator recruitment



## Statewide Recognition, Authority, and Reach

- New Integrated Practice Agreement with RWJBarnabas Health



## Strengthened Impact of the Consortium

- Enhanced cancer focus (~50% increase in PU members)
- Integration of PU members into all five Programs
- Support of collaborations that formed the foundation of our center-defining initiative in immunology and metabolism

# Comprehensiveness



**Five well funded, highly cancer focused and complementary science programs** spanning and integrating the continuum of basic, translational, population and clinical research



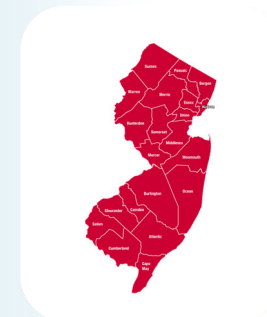
**Commitment to advancing education** from elementary school students to CINJ faculty with new NCI funded training grants and unique community partnerships



**Paradigm shifting, practice and policy changing discoveries** capitalizing on expertise across our Rutgers and Princeton University Consortium



**Extensive transdisciplinary collaboration and coordination** across CINJ, Rutgers, Princeton, RWJBarnabas Health, New Jersey and with other NCI designated Centers across the US



**Research that is informed by and committed to our catchment area** with significant positive impact on our communities driven by a highly engaged COE Office and CCAB

**New Jersey's Only NCI-designated Comprehensive Cancer Center Since 2002**

# Future Plans

- 1 Investment and Growth:** immunology and metabolism research
- 2 Increase Project and Training Grants:** CPC U01 and GICG T32 planned for 2023
- 3 Open Morris Cancer Center:** catchment area hub of tertiary cancer care
- 4 Expand Clinical Trial Activities Across System:** increase interventional and non-interventional accruals
- 5 Prevent More Cancers and Screen More Patients:** reduce incidence and mortality
- 6 Increase Translation:** into the clinic and ultimately to commercialization through REACH and CETI
- 7 Implement Plan to Enhance Diversity:** increase and enhance representation among leadership, trainees, staff



## 2021-2025 Strategic Plan

RUTGERS  
Cancer Institute  
of New Jersey  
RUTGERS HEALTH

NCI Comprehensive  
Cancer Center  
A Cancer Center designated by the  
National Cancer Institute

## Develop 2026 – 2030 Strategic Plan



# Thank You

Q&A Segment



**RUTGERS**  
Cancer Institute  
of New Jersey  
**RUTGERS HEALTH**

