



Free ECHO Programs on OUD

The COEs are leading biweekly, interactive virtual educational sessions on MAT and continuous quality improvement topics through December. To register for the series and to receive free CE credits, click [here!](#)

Next Session: Friday, September 25th, 12pm-1pm

Topic: Documentation: Clinical Note Taking, Consent Forms, Patient Agreements, and Prescription Monitoring



MAT Lunch Hour: MAT in Primary Care

Join us at our open forum to discuss MAT and network. Our next session will feature a discussion on experiences with MAT in primary care. All are welcome!

Next Forum: Wednesday, September 16th, 12-1pm

[Click Here to Register](#)



Virtual Town Hall: SUD Treatment in NJ During COVID-19 and Beyond

Register for a free virtual town hall on substance use disorder treatment during the COVID-19 pandemic and beyond. Panelists include speakers from the Centers of Excellence, Integrity House, and CarePlus NJ.

Date of Event: Tuesday, September 29th, 2pm

[Click Here to Register](#)



ALERT: Free Naloxone Distribution September 24-26 at Participating Pharmacies

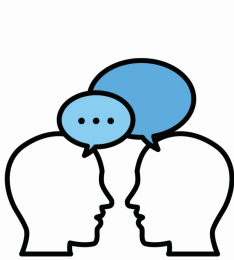
To combat opioid overdoses, the Dept. of Human Services is providing free naloxone from September 24-26. No name or prescription is required. To see a list of participating pharmacies, visit the DHS [website.](#)

Is there "compassion fatigue" amongst law enforcement who respond to overdoses?



A [survey](#) assessed officers' experiences with responding to overdoses (OD). Among those responding to an OD call within the past 6 months, only 26% correctly knew whether Good Samaritan Laws protected people who survived or witnessed an OD and 36% made arrests in these cases. Officers who reported responding to overdoses weekly or monthly were also less likely to endorse overdose response efforts than those who do not routinely respond to ODs.

[Download Article](#)



Audio Interview: Low-Threshold Buprenorphine

Dr. Justin Berk, an assistant professor at Warren Alpert Medical School of Brown University, discusses the importance of a [low-threshold approach](#) to buprenorphine.

24/7 MAT Provider Hotline: 844-HELP OUD (844-435-7683)



NORTHERN NJ
MAT CENTER OF EXCELLENCE
Coe@njms.rutgers.edu

RUTGERS
New Jersey Medical School



SOUTHERN NJ
MAT CENTER OF EXCELLENCE
Southernnjcoe@rowan.edu

Cooper
University Health Care
Rowan Medicine