

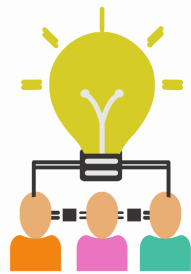


### Free ECHO Programs on OUD

The COEs are leading biweekly, interactive virtual educational sessions on MAT and continuous quality improvement topics through December. To register for the series and to receive free CE credits, click [here!](#)

**Next Session: Friday, October 2nd, 12pm-1pm**

**Topic:** Evidence-Based Treatment for Opioid Use Disorder



### MAT Lunch Hour: Legal Advocacy

Join us at our open forum to discuss MAT and network. Our next session will feature a discussion on legal advocacy for the patient with OUD. All are welcome!

**Next Forum: Wednesday, September 30th, 12-1pm**

[Click Here to Register](#)



### REMINDER: Virtual Town Hall - SUD Treatment in NJ During COVID-19 and Beyond

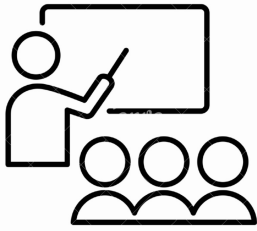
Register for a free virtual town hall on substance use disorder treatment during the COVID-19 pandemic and beyond. Panelists include speakers from the Centers of Excellence, Integrity House, and CarePlus NJ.

**Date of Event: Tuesday, September 29th, 2pm**

[Click Here to Register](#)

### ALERT: Upcoming OBAT Navigator Trainings with the Camden Coalition

The OBAT Navigators play a critical role in the expansion of MAT services in New Jersey, being tasked with initiating and maintaining a psychosocial treatment plan to support patients in their recovery. In October and December, four training sessions will focus on techniques to identify the needs of your MAT patients, make patient-centered referrals, connect with resources in your community, and support a patient-driven care plan. Click the below options to register for your preferred series.



October Series

December Series

---

## Polysubstance use in patients with opioid use disorder shown to reduce access to MAT in a longitudinal analysis



Although patients with OUD and polysubstance use are at much higher risk of overdose death than those without polysubstance use, a cross-sectional longitudinal analysis found that patients with OUD who concurrently used other substances (methamphetamines, benzodiazepines, cocaine, alcohol) received MAT at a significantly lower rate than those without concurrent use.

[Download Article](#)

---

24/7 MAT Provider Hotline: 844-HELP OUD (844-435-7683)



NORTHERN NJ  
MAT CENTER OF EXCELLENCE  
Coe@njms.rutgers.edu

**RUTGERS**  
New Jersey Medical School



SOUTHERN NJ  
MAT CENTER OF EXCELLENCE  
Southernnjcoe@rowan.edu

**Cooper**  
University Health Care  
**Rowan**Medicine