

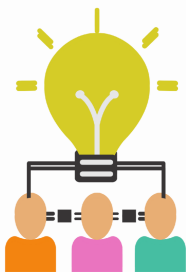


**Need Assistance in Addressing New Patient Flow in Your Practice?**

The COEs are leading biweekly, interactive virtual educational sessions on MAT and continuous quality improvement topics through December. To register for the ECHO series and to receive free CE credits, click [here!](#)

**Next Session: Friday, October 23rd, 12pm-1pm**

**Topic:** Addressing Patient Demand: New Patient Flow



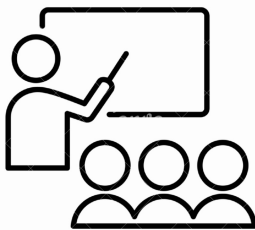
**Biweekly MAT Lunch Hours**

Thank you for your continued support of the MAT Lunch Hours. We look forward to meeting with over 40 MAT colleagues biweekly and the chance to network and talk about MAT. Please be on the lookout for an announcement of our next exciting topic! All are welcome!

**Next Forum: Wednesday, October 14th, 12pm-1pm**

[Click Here to Register](#)

**UPDATE: Upcoming OBAT Navigator Trainings with the Camden Coalition**



**The previously advertised OBAT Navigator Training in October has been cancelled.**

The OBAT Navigators play a critical role in the expansion of MAT services in New Jersey, being tasked with initiating and maintaining a psychosocial treatment plan to support patients in their recovery. In December, four training sessions will focus on techniques to identify the needs of your MAT patients, make patient-centered referrals, connect with resources in your community, and support a patient-driven care plan. Click to register for the series in December.

[December Series](#)

**Are you a provider looking to integrate evidence-based treatment for SUD in your practice?**

PCSS is hosting an implementation initiative to support



clinicians in their program. Highlights of this 6-month monthly program include once monthly meetings with your multidisciplinary team to provide individualized technical assistance, access to a library of screening tools, clinical guidelines, business models, and access to other resources, including clinical mentorship. An application is required. For more information, click [here](#).



### **Article: Case-control study finds that individuals with SUD, especially OUD, have increased risk for COVID-19 and associated adverse outcomes**

This retrospective study from electronic health records in the U.S. finds that patients with COVID-19 and SUD had significantly worse outcomes than those without SUD. It also found that African Americans with SUD and COVID-19 had worse outcomes than Caucasians afflicted with these diseases, possibly due to disparities in health care. Amongst SUD, OUD was found to have the highest risk.

[Download Article](#)

24/7 MAT Provider Hotline: 844-HELP OUD (844-435-7683)

	<p>NORTHERN NJ MAT CENTER OF EXCELLENCE Coe@njms.rutgers.edu</p> <p><b>RUTGERS</b> New Jersey Medical School</p>		<p>SOUTHERN NJ MAT CENTER OF EXCELLENCE Southernnjcoe@rowan.edu</p> <p><b>Cooper</b> University Health Care</p> <p><b>Rowan</b>Medicine</p>
--	--	--	---