



MEDICATION-ASSISTED TREATMENT CENTERS OF EXCELLENCE

August 22nd, 2023

BIWEEKLY NEWSLETTER

Vol. 81



USE OF MEDICATION FOR OPIOID USE DISORDER AMONG ADULTS WITH PAST-YEAR OPIOID USE DISORDER IN THE US, 2021

With different strategies being implemented to increase MOUD availability, many with OUD do not actually receive it. This analysis used data from the 2021 National Survey on Drug Use and Health (NSDUH) to estimate how often US adults with past-year OUD received MOUD. Findings showed that of 47,291 adult participants, only about 1 in 5 adults with past-year OUD received any form of OUD. Black adults, women, those living in rural areas, and those who were unemployed were less likely to receive MOUD. These findings suggest that **MOUD remains significantly underused.**

WHAT'S INSIDE

UPCOMING EVENTS

[Southern COE Sponsored Event: Urine and Blood Toxicology Interpretation](#)

[Harm Reduction Approaches to Substance Use Certificate Launch](#)

[Project ECHO: Quality Improvement Application: Case Studies](#)

[Southern COE Sponsored Event: Addiction Care In Neonates, Children, and Adolescents](#)

HEADLINES

[Use of Medication for Opioid Use Disorder Among Adults With Past-Year Opioid Use Disorder in the US, 2021](#)

Literature

[Integrating Opioid Use Disorder Treatment Into Primary Care Settings](#)

[Buprenorphine Out-of-Pocket Costs and Discontinuation in Privately Insured Adults With Opioid Use Disorder](#)

[Risks of returning to opioid use at treatment entry and early in opioid use disorder treatment: role of non-opioid substances](#)

UPCOMING EVENTS



SOUTHERN COE SPONSORED EVENT: URINE AND BLOOD TOXICOLOGY INTERPRETATION

TUESDAY, AUGUST 29, 2023, 10:00 AM – 12:00 PM

Project ECHO is straight-forward, specific and applicable. At every live session we explore active patient challenges from multiple perspectives. We each hold a piece of the puzzle and everyone is welcome to share experiences. You'll meet practitioners from across the state through a simple video interface and become part of a collegial community. You'll have a comfortable place to return and will build on what you're learning, month to month.

PROJECT ECHO: QUALITY IMPROVEMENT APPLICATION: CASE STUDIES

FRIDAY, SEPTEMBER 8, 2023, 12:00 PM - 1:00 PM

Project ECHO is straight-forward, specific and applicable. At every live session we explore active patient challenges from multiple perspectives. We each hold a piece of the puzzle and everyone is welcome to share experiences. You'll meet practitioners from across the state through a simple video interface and become part of a collegial community. You'll have a comfortable place to return and will build on what you're learning, month to month.

HARM REDUCTION APPROACHES TO SUBSTANCE USE CERTIFICATE LAUNCH

THURSDAY, AUGUST 31, 2023, 12:00 PM - 1:00 PM

This certificate introduces students to the concept of harm reduction, discusses a range of harm reduction services and programs, and offers practical training on non-stigmatizing, social justice-oriented, and trauma-informed engagement strategies with people who use drugs.

SOUTHERN COE SPONSORED EVENT: ADDICTION CARE IN NEONATES, CHILDREN, AND ADOLESCENTS

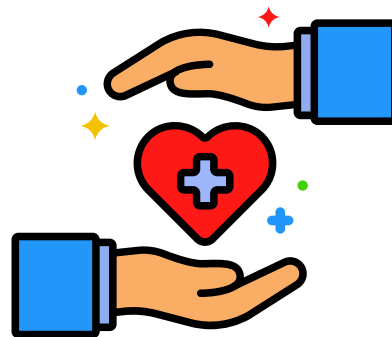
FRIDAY, SEPTEMBER 15, 2023, 2:00 PM – 4:00 PM

AMA PRA Category 1 Credits™ (2.00 hours), Non-Physician Attendance (2.00 hours)
Accreditation, The Cooper Health System is accredited by the Accreditation Council for Continuing Medical Education (ACCME) to provide continuing medical education for physicians.

LITERATURE / NEWS

INTEGRATING OPIOID USE DISORDER TREATMENT INTO PRIMARY CARE SETTINGS

This mixed methods study consisted of a cohort of 12 different clinics which explored the implementation experiences of integrative primary care (PC) teams that were expanding MOUD services. The authors recognized that PC could play a huge role in reducing OUD burden and act as access point for OUD identification and treatment, but adoption of MOUD has been slow in PC settings. They used practice facilitation to provide ongoing coaching to support each clinic's implementation. They found that most clinicians believed dispensing MOUD in PC settings was important without abstinence being the primary goal. These findings show a shift toward less stigmatizing views among PC providers. However, many providers also held negative attitudes about MOUD increasing their workload without forms of relief. Providers also expressed concerns and barriers to scheduling capacity. These findings suggest a need for addressing barriers that cause PC teams to feel burdened by MOUD. While the findings showed fewer stigmatizing views among PC providers, **stigma at the community and institutional levels will continue to hinder MOUD implementation efforts in PC settings if it is not addressed.**



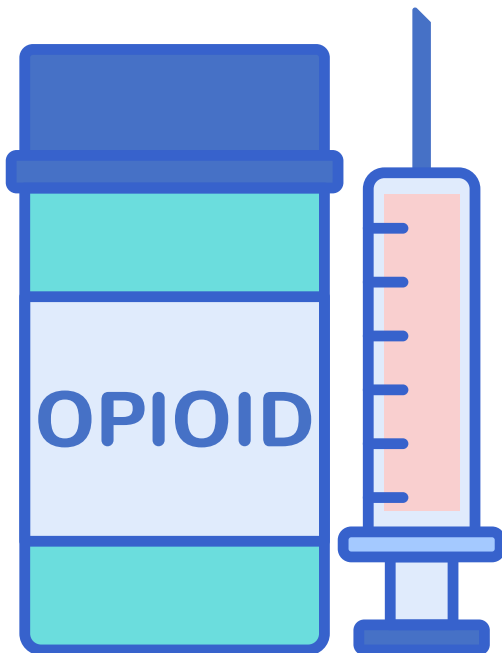
BUPRENORPHINE OUT-OF-POCKET COSTS AND DISCONTINUATION IN PRIVATELY INSURED ADULTS WITH OPIOID USE DISORDER

Although there has been an increase in buprenorphine-waivered clinicians, patients with OUD are not utilizing the services. This paper analyzed the association between out-of-pocket (OOP) costs for patients' initial buprenorphine prescription and discontinuation within a 1-year period among commercially insured US adults. This study was done to understand barriers to medication persistence among those who initiate pharmacotherapy. Findings showed that higher OOPs costs were associated with increased risk of medication discontinuation. **Findings suggest that policies addressing these types of barriers may reduce and avert the impact of adverse health outcomes associated with OUD.**

LITERATURE / NEWS

RISKS OF RETURNING TO OPIOID USE AT TREATMENT ENTRY AND EARLY IN OPIOID USE DISORDER TREATMENT: ROLE OF NON-OPIOID SUBSTANCES

This study harmonized three randomized, controlled MOUD clinical trials and investigated whether the use of non-opioid substances either at the time of treatment entry and early treatment influenced a 12-week treatment outcome, while also comparing methadone, naltrexone, and buprenorphine treatments. Findings showed no effect on treatment for any substances at treatment entry but found that ongoing use of amphetamine and cocaine in the first 4 weeks of treatment predicted worse OUD treatment outcome and higher risks of relapse at week 12. Findings also showed that extended-release naltrexone was associated with reduced negative effects of cocaine during the first 4 weeks compared to methadone and buprenorphine treatment. Future studies could identify interventions for those using non-opioid substances during early treatment to prevent risks of relapse.



RESOURCE

BE A HERO: HELP EVERYONE REVERSE OVERDOSE

Naloxone (brand name Narcan) is now available free of charge to anyone 14 years or older in New Jersey at participating pharmacies (No ID or prescription required).

Why is carrying naloxone important?

Since 2018, tens of thousands of New Jerseyans have experienced an overdose and more than 15,000 died of a suspected drug-related death. Narcan immediately reverses an opioid overdose, dramatically increasing the chance for survival while ultimately improving the odds for future recovery

Please Click the button below for participating Pharmacies

[CLICK HERE](#)

HARM REDUCTION APPROACHES TO SUBSTANCE USE CERTIFICATE LAUNCH

Montclair State University is thrilled to announce the launch of our new Harm Reduction Approaches to Substance Use graduate certificate. Join us online and hear from the Graduate Program Coordinator Sheriff James M. Gannon, and Clement Chen, PharmD from the Northern NJ MAT Center of Excellence. They will discuss strategies to fight the opioid epidemic and the need for collaborations across agencies, such as law enforcement, healthcare settings, higher education institutions, and private organizations.



MEDICATION-ASSISTED TREATMENT
CENTERS OF EXCELLENCE

24/7 MAT Provider Hotline: 844-HELP OUD (844-435-7683)

Northern NJ MAT COE [Website](#) & [Email](#)

Southern NJ MAT COE [Website](#) & [Email](#)