

RUTGERS

UNIVERSITY | NEWARK



The Research Office ANNUAL REPORT FY14

July 1, 2013 - June 30, 2014

TABLE OF CONTENTS

FY14 Cumulative Awards More Than \$500,000	page 1
FY14 Single Awards More than \$300,000	page 2
FY14 Awards by Department—Diagram	page 3
FY14 Awards by Departmental Unit	page 4
FY14 Awards by Department - Comparative	page 5
FY14 Direct Federal Awards	page 6
FY14 Awards by Funding Source	page 6
FY14 Awards by Funding Source—Comparative	page 7
The stories and the people behind the numbers	page 8
Back cover—from the James Tepper research lab	page 9



Nancy Cantor
Chancellor
Rutgers University—Newark



Nabil Adam
Vice Provost for Research
Rutgers University—Newark

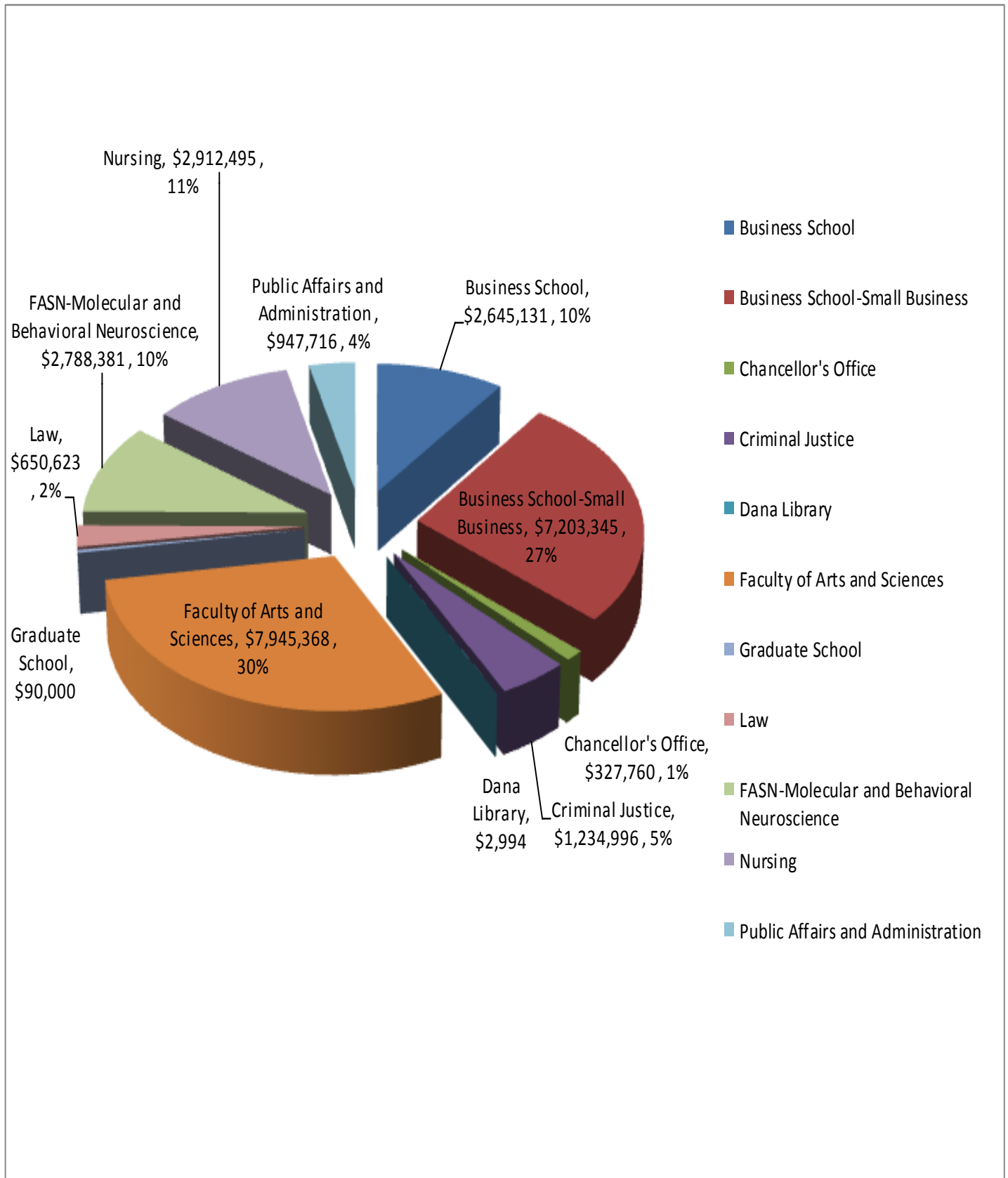
FY 14 CUMULATIVE AWARDS MORE THAN \$ 500,000

Brenda Hopper	Rutgers Business School-SBDC	\$7,198,345
Edna Cadmus	College of Nursing	\$1,606,178
Alexander Gates	FASN-Earth & Environmental Sciences	\$1,060,000
James Abruzzo/ Alex Plinio	Rutgers Business School-IEL	\$ 940,000
Karen D'Alonzo	College of Nursing	\$ 586,916
Linda Tartaglia	School of Criminal Justice	\$ 571,484
Elena Galoppini	FASN-Chemistry	\$ 547,900
Wilma Friedman	FASN-Biological Sciences	\$ 532,800
James Tepper	FASN-CMBN	\$ 527,041
Lee Slater	FASN-Earth & Environmental Sciences	\$ 512,247

FY14 SINGLE AWARDS MORE THAN \$300,000

PI Name		Department	Co-PI	Funding Agency	Project Title	Award Amount
Hopper	Brenda	RBS-NJSBDC	Deborah Smarth	US Small Business Administration	Phase Two: Hurricane Sandy Small Business Revitalization Opportunity	\$3,582,000
Hopper	Brenda	RBS-NJSBDC	Deborah Smarth	US Small Business Administration	NJ Small Business Development Center	\$2,989,940
Cadmus	Edna	College of Nursing	Susan Salmond	NJ Department of Health and Senior Services	Rutgers University Training into Practice Residency Model for Long Term Care(LTC)	\$1,605,553
Gates	Alexander	FASN-Earth and Environmental Sciences		National Science Foundation	LSAMP - The Garden State Alliance for Minority Participation	\$1,000,000
Abruzzo	James	RBS-IEL	Alex Plinio	Prudential Foundation	General Operating Support for Institute for Ethical Leadership and Support for the Nonprofit Executive Leadership Fellows Program	\$850,000
Tartaglia	Linda	School of Criminal Justice	James Sheehan, Rachel Tkatch	County of Morris, UASI Committee	Urban Area Security Integration (UASI)	\$541,058
Friedman	Wilma	FASN-Biological Sciences		NIH/NINDS	Modulating ProNGF-Induced Cell Death in Epilepsy: Strategies for Neuroprotection	\$532,809
Tepper	James	FASN-CMBN		NIH/NINDS	Functional Striatal Microcircuits in vivo and in vitro	\$527,041
Zaborszky	Laszlo	FASN-CMBN		NIH/NINDS	Afferent Regulation of Cholinergic Forebrain Neurons	\$426,481
Jaekle	Frieder	FASN-Chemistry		National Science Foundation	SusChEM: Polymer-Supported Frustrated Lewis Pairs (FLPs)	\$390,000
Pare	Denis	FASN-CMBN		NIH/NIMH	Functional organization of the bed nucleus of the stria terminalis	\$387,500
Cali	Ann	FASN-Biological Sciences		National Institutes of Health/ NIAID	Assembly dynamics and role of PI4P enriched replication organelles for enteroviral RNA replication in vivo	\$384,150
Krekelberg	Bart	FASN-CMBN		NIH/NEI	Eye Movements and Visual Perception	\$379,750
Koos	Tibor	FASN-FASN-CMBN	James Tepper	NIH/NINDS	Optogenetic Analysis of Neostriatal Circuits Engaged by Cholinergic Interneurons	\$335,673
Slater	Lee	FASN-Earth and Environmental Sciences	Kristina Keating	DoD, US Army Corps of Engineers	Investigating the Sensitivity of Emerging Geophysical Technologies to Immobilize Porosity and Isolated DNAPL and Dissolved/ Sorbed VOC Mass in Fractured Media	\$334,916
Delgado	Mauricio	FASN-Psychology		NIH/NIDA	Neural mechanisms of avoidance learning and active coping via emotion regulation	\$333,825
Maurel	Patrice	FASN-Biological Sciences		NIH/NINDS	Nectin-like cell adhesion molecules and the mechanism of myelination	\$327,196
D'Alonzo	Karen	College of Nursing		US Dept. of Health and Human Services: HRSA	Nurse Faculty Loan Program (NFLP)	\$316,952
Eastman	Wayne	RBS-SCMMS	Donald Knock, Thomas York	US Department of Labor	Trade Adjustment Assistance Community College and Career Training Program (TAACCT)	\$301,678
Willard	Suzanne	College of Nursing		Health Resources and Services Administration (HRSA)	Preparing Nurse Practitioners to Care for HIV in an Urban & Inner City Populations	\$300,000

FY14 AWARDS BY DEPARTMENT



FY14 AWARDS BY DEPARTMENTAL UNIT

Faculty of Arts and Sciences (FASN)

Academic Foundations	\$ 476,723
Biology	\$2,063,126
CMBN	\$2,788,381
Chemistry	\$1,196,748
Urban Education	\$ 730,916
Earth & Environmental Sciences	\$2,275,460
History	\$ 66,070
Mathematics	\$ 246,454
Physics	\$ 50,000
Psychology	\$ 810,170
Sociology	\$ 5,000
Robeson	\$ 24,701

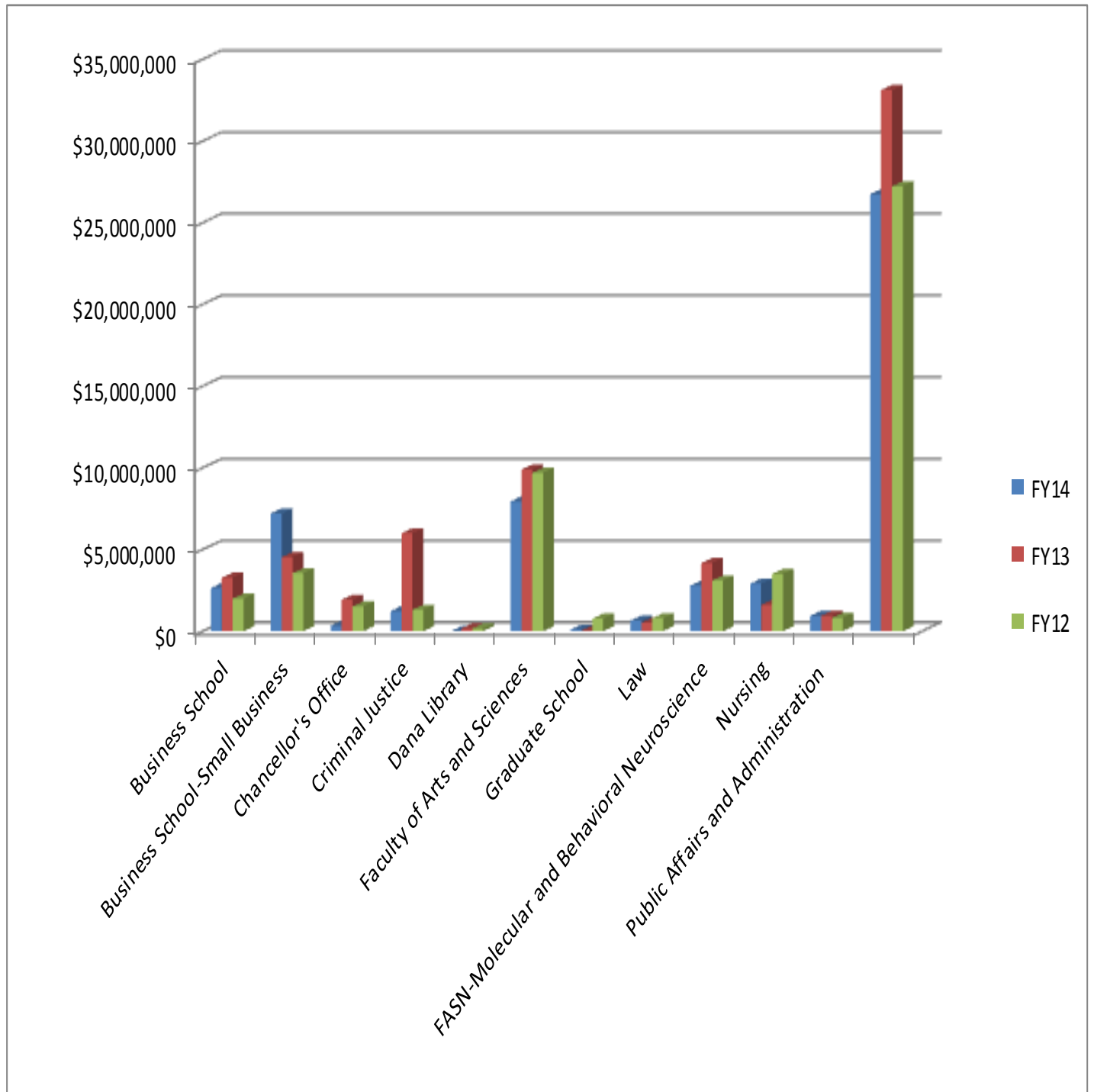
Rutgers Business School

Dean's Office	\$ 81,252
Accounting and Information Science	\$ 358,250
Finance and Economics	\$ 63,958
Institute for Ethical Leadership	\$ 940,000
Management and Global Business	\$ 142,647
Management Science & Information Systems	\$ 487,346
Marketing	\$ 120,000
RU Technical Assistance Project	\$ 100,000
Supply Chain Management & Marketing Sciences	\$ 351,678
Small Business Development Center (SBDC)	\$7,203,345

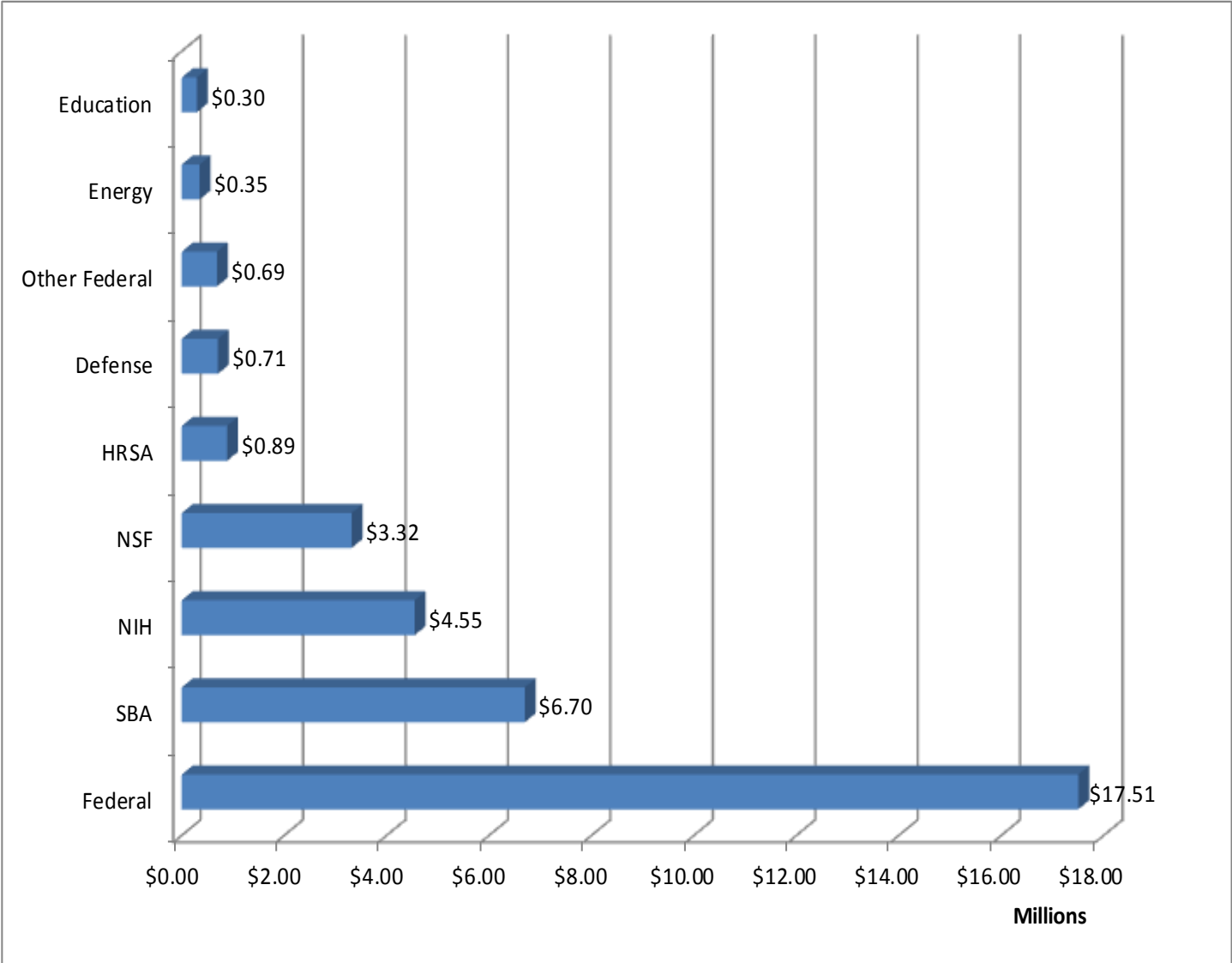
Chancellor's Office

Office of University-Community Partnerships	\$ 327,760
--	-------------------

FY14 AWARDS BY DEPARTMENT - FY14 / FY13 / FY12



FY14 DIRECT FEDERAL AWARDS



FY14 AWARDS BY FUNDING SOURCE

Federal Awards	\$17,506,754	65%
Foundations/Industry	\$ 4,268,184	16%
State of New Jersey	\$ 2,745,357	10%
Local Government	\$ 1,089,783	4%
Other	\$ 1,138,731	4%

FY14 AWARDS BY FUNDING SOURCE—FY14/13/12/11/10

	FY14	FY13	FY12	FY11	FY10
Federal - NIH	\$4,553,579	\$7,548,843	\$6,556,042	\$7,566,747	\$9,085,679
Federal - NSF	\$3,319,989	\$5,147,456	\$3,348,047	\$5,303,411	\$5,541,945
Federal - Other	\$9,633,186	\$9,250,785	\$7,195,823	\$8,998,700	\$6,029,821
Federal Indirect (Subcontracts)	N/A	\$713,947	\$939,016	\$1,662,385	\$1,526,664
Corporate and Foundation	\$4,268,184	\$8,408,955	\$5,883,337	\$3,704,639	\$5,583,098
Other	\$1,138,731	\$635,226	\$1,304,696	\$819,706	\$361,437
State of NJ	\$2,745,357	\$978,874	\$1,505,734	\$1,900,665	\$1,573,506
Local Govt.	\$1,089,783	\$428,124	\$490,880	\$1,039,747	\$353,663
TOTAL	\$26,748,809	\$33,112,210	\$27,223,575	\$30,996,000	\$30,055,813

The New Jersey Small Business Development Center was established by Congress in 1978 as one of the first national SBDC pilot projects resulting from the passage of Public Law 96-302. At present the [NJSBDC](#) network is composed of the headquarters located at Rutgers Business School - Newark and New Brunswick, and 11, full-service, regional centers, and an additional 27 affiliate (or satellite) offices located throughout the state. Regional centers are hosted by and affiliated with a two- and four-year college and university business programs with a major footprint for comprehensive Business assistance and outreach.

The Small Business Administration funding to the Newark Campus accounted for 38% of federal funds awarded and 25% of total awards in FY14.

THE STORIES AND THE PEOPLE BEHIND THE NUMBERS

Awards in FY14 totaled \$26,748,809 (based on awards processed in the Research Office), a 19% drop from the prior fiscal year. There are several explanations for the reduction, including award timing, federal government sequestration, the lack of a substantial foundation award as in FY13.

Most noticeably was the fall in awards from the National Institutes of Health and the National Science Foundation.

The Center for Molecular and Behavioral Neuroscience this year earned the highest total in awards received, followed by the Department of Earth and Environmental Sciences.

The NJ Small Business Development Centers benefitted from over three and a half million dollars in Superstorm Sandy relief funds to assist in the recovery efforts.

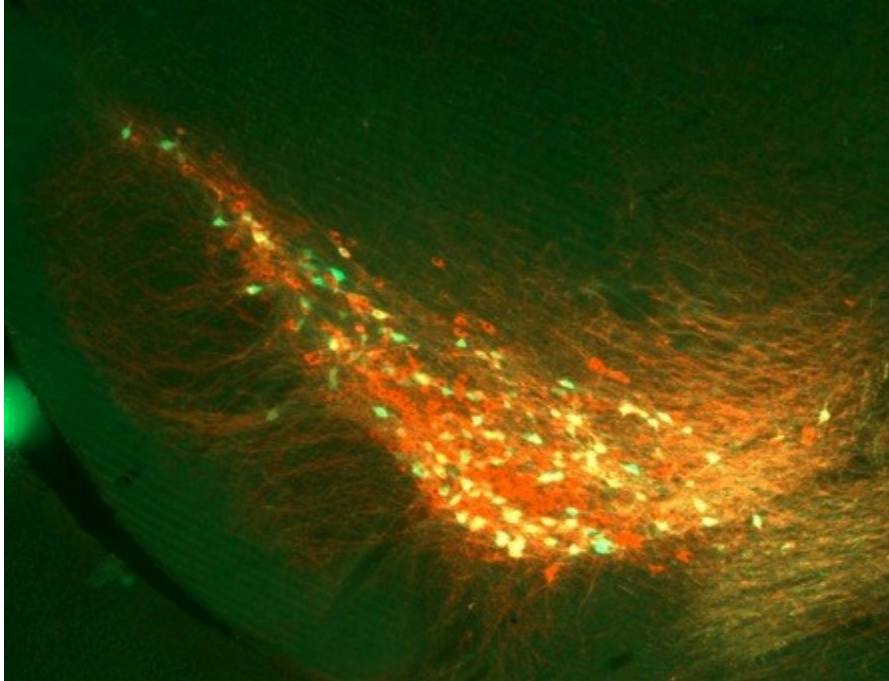
Several of our young faculty were successful in obtaining external funding including Nan Gao in Biological Sciences (NIH and NJ Commission on Cancer Research); Radek Dobrowolski in Biological Sciences (American Federation for Aging Research, Alzheimer's Association); Michael Cole in CMBN (NIH); Michele Pavanello in Chemistry (American Chemical Society); William Graves in Psychology (NIH).

The former Vice Chancellor for Research, Alexander Gates, returned to his faculty position as of January 1, 2014.



The Life Sciences Center (225 University Ave) provides extensive, cutting-edge research laboratories dedicated to undergraduates and graduates. The building is also home to the cell biology wing of the department, which serves as the driving force behind the program in cellular biodynamics.

CONGRATULATIONS RUTGERS UNIVERSITY—NEWARK FY14



The figure shows the coexpression of dopamine (red) and green fluorescent protein (GFP) - green in dopaminergic neurons in the midbrain of a mouse genetically engineered to express GFP in all cells in the body (and brain!) that normally express tyrosine hydroxylase, the rate limiting enzyme for the synthesis of dopamine.

The James Tepper group in CMBN studies the normal functions of the basal ganglia subsume cognition, emotion, learning and memory and sensorimotor integration, in addition to control of voluntary movement. Disorders of the basal ganglia include Parkinson's disease, Huntington's disease, schizophrenia and other dysfunctions of thought and emotion, as well as impairments of voluntary movement. Tepper's research is supported by the National Institutes of Health.



Research Office
Blumenthal Hall, Suite 206
249 University Ave
Newark, NJ 07102
Phone: 973-353-1537
Fax: 973-353-1536

Page 9

<http://researchoffice.newark.rutgers.edu/>

Contacts:

Jacqueline Cornelius, Director

973-353-1538, jcorneli@andromeda.rutgers.edu

Patricia Bender, Research Contracts/Grants Specialist

973-353-1539, pbender@andromeda.rutgers.edu

Timothy Kirby, Research Contracts/Grants Specialist

973-353-3461, timkirby@andromeda.rutgers.edu

Wanda James, Assistant