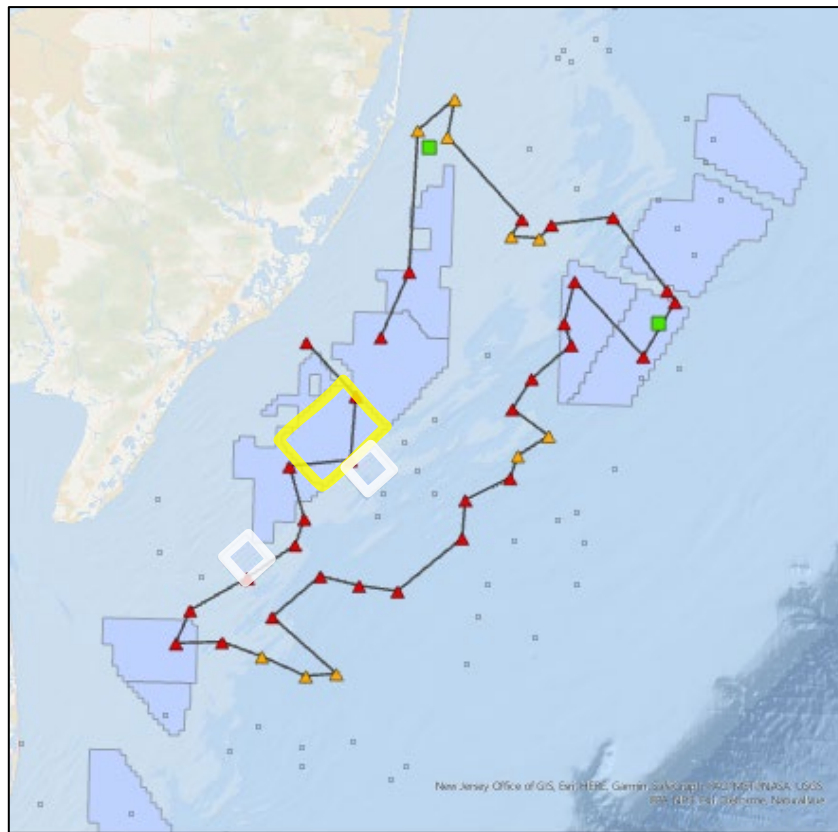


Daphne Munroe

Department of Marine & Coastal Science

Surveys and Experiments for Monitoring Surfclams at Offshore Wind Projects



Legend

- | | |
|-------------------------|------------------------|
| Updated Subset Stations | □ Federal Stations |
| Priority | — Travel Path |
| ▲ 1 | ▨ Federal Control Area |
| ▲ 2 | ■ Lease Areas |
| ■ OA Stations | World_Ocean_Base |



0 10 20 40 Miles

